



**【Ground Mounting System】**

**【Carport Mounting System】**

**【Agricultural Solar Mounting】**



**YOUR SOLAR SOLUTION PARTNER**

**Raysol New Energy Co.,LTD**

Building No. 4, 851 Zhongxing South Rd, Shaoxing 3120000, China.

Tel: (+86)575-89106177      (+86)18358514915 (whatsapp)

www.raysolenergy.com      info@raysolenergy.com



**Raysol New Energy Co.,LTD**

**-----solar solutions**



# COMPANY PROFILE

about **RAYSOL**



Raysol New Energy Co., Ltd., as a trustworthy partner for integrated solar system, solar carport, solar mounting system, Raysol Energy is dedicated to be your best solar solution partner. Founded in 2019, but with solar industry experiences for more than 15 years, with our business covers more than 30 countries and regions, Including North America, European, Australia, Southeast Asia and Africa ...

Based on the service philosophy that our partner's interests above all, we always put our partners' interests and concerns above anything else. We offer high quality residential & large-scale solar systems, solar mounting structures, solar carports, and other solar applications equipment, by the support from our design & engineering team, we can always provide the right product & solution to our partners.

**HIGH QUALITY PRODUCTS, ON-TIME DELIVERY and QUICK RESPONSE AFTER-SALES SERVICE** are our fundamental responsibility and commitment to our partners.

On the way to green our planet and our daily life, we hope to be **YOUR SOLAR SOLUTION PARTNER**

● **Enterprise Vision**  
To be one part of Green Planet Process

● **Enterprise Mission**  
To be trusted by our partner

● **Enterprise Core Value**  
Do it right at the first time

● **Roots**  
Always with good quality products and service  
Always bring added value for our partner



## CATALOGUE

01-02 Full Aluminum Ground Mounting

03-04 Ground Pile Mounting

05-06 Full Aluminum Carport

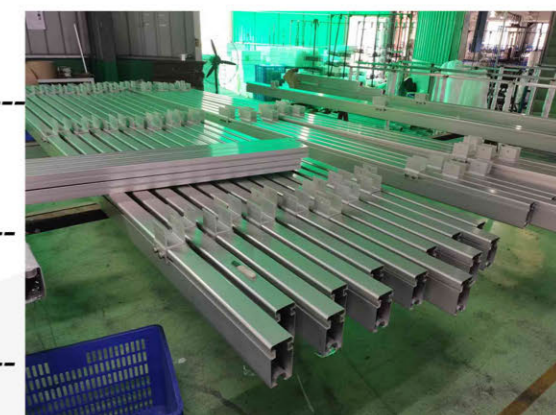
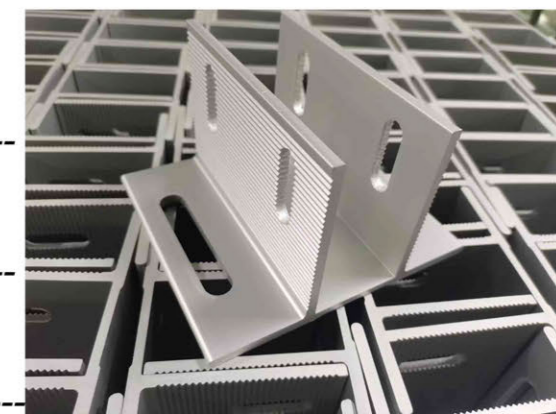
07-08 BIPV Waterproof Carport

09-10 Single Pole Solar Carport

11-12 Agriovltaic/Agricultural Solar Mounting

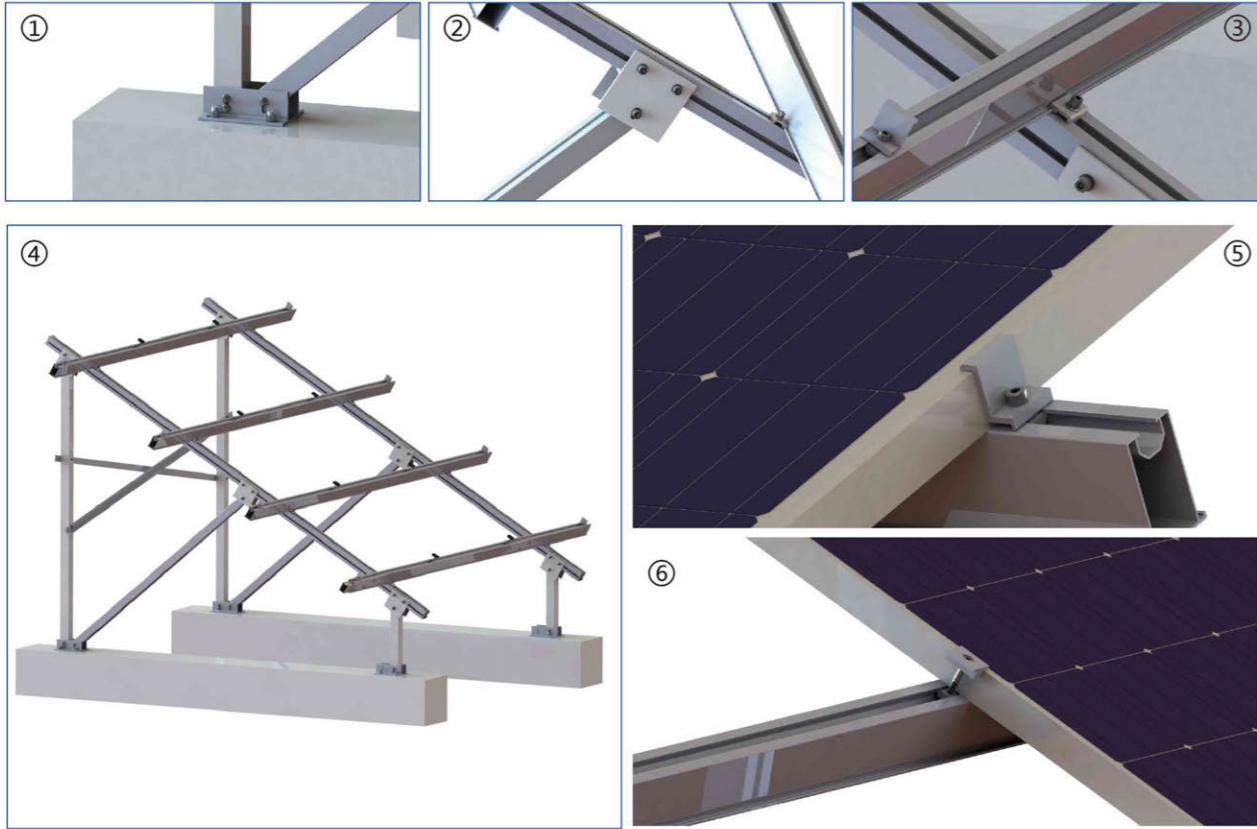
13-14 Ground Screw Piles

15-16 Projects Reference

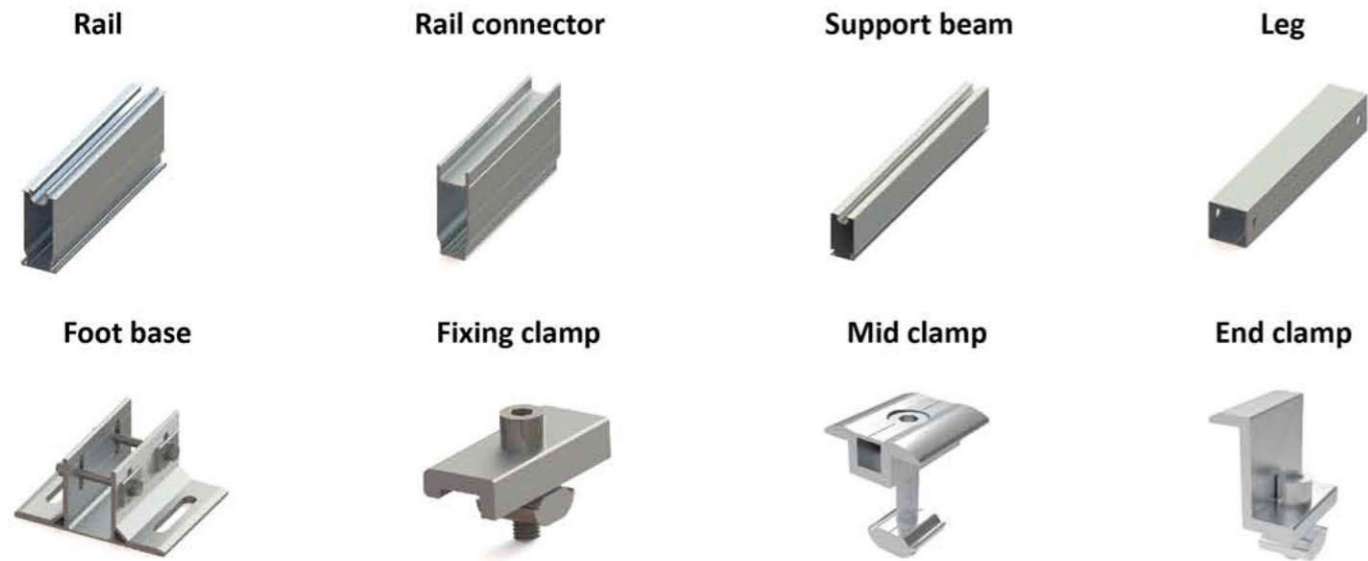


# Full Aluminum Ground Mounting

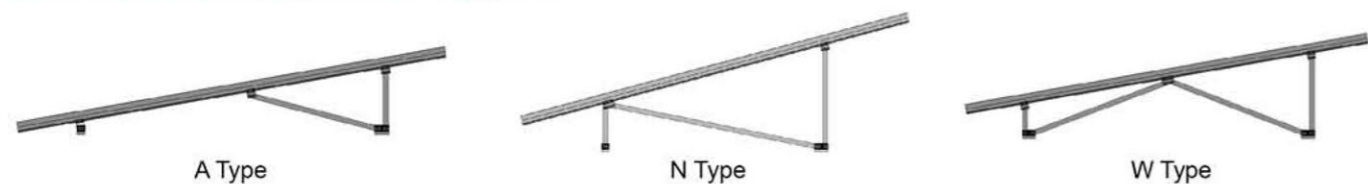
Solar ground mounting is usually applicable to the open field, not only residential project, but also big commercial project. It is featured with lightweight, strong, and recyclable material, and the pre-assemble support rack save your time and labor cost.



## Components List



## Mounting Structure Types



## Ground screw foundation



## Concrete foundation



## Technical Data

Installation site :	Open field/Ground
Module angle :	0~60 degree
Max wind speed :	Up to 60m/s
Max snow load:	Up to 1.4KN/m2
Material :	AL6005-T5 & SUS304
Module orientation :	Landscape, Portrait
Foundation :	Concrete base, Ground screw
Standard :	AS/NZS S1170, JISC8955:2017, EU Standard

## Advantages

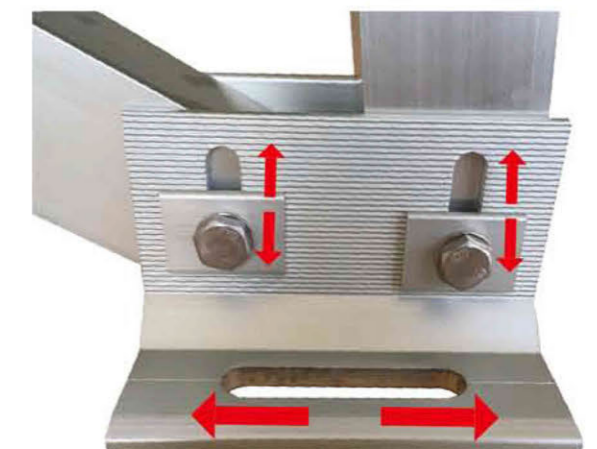
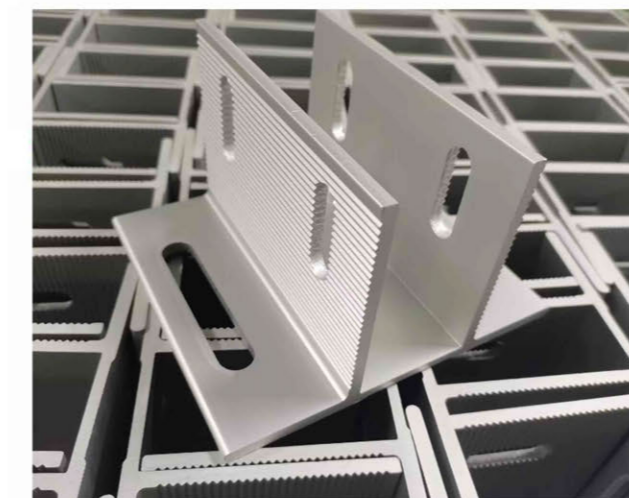
### 1. High pre-assembled, save cost and time

Beam and reinforced leg are pre-assembled before shipment to save the installation time and cost.



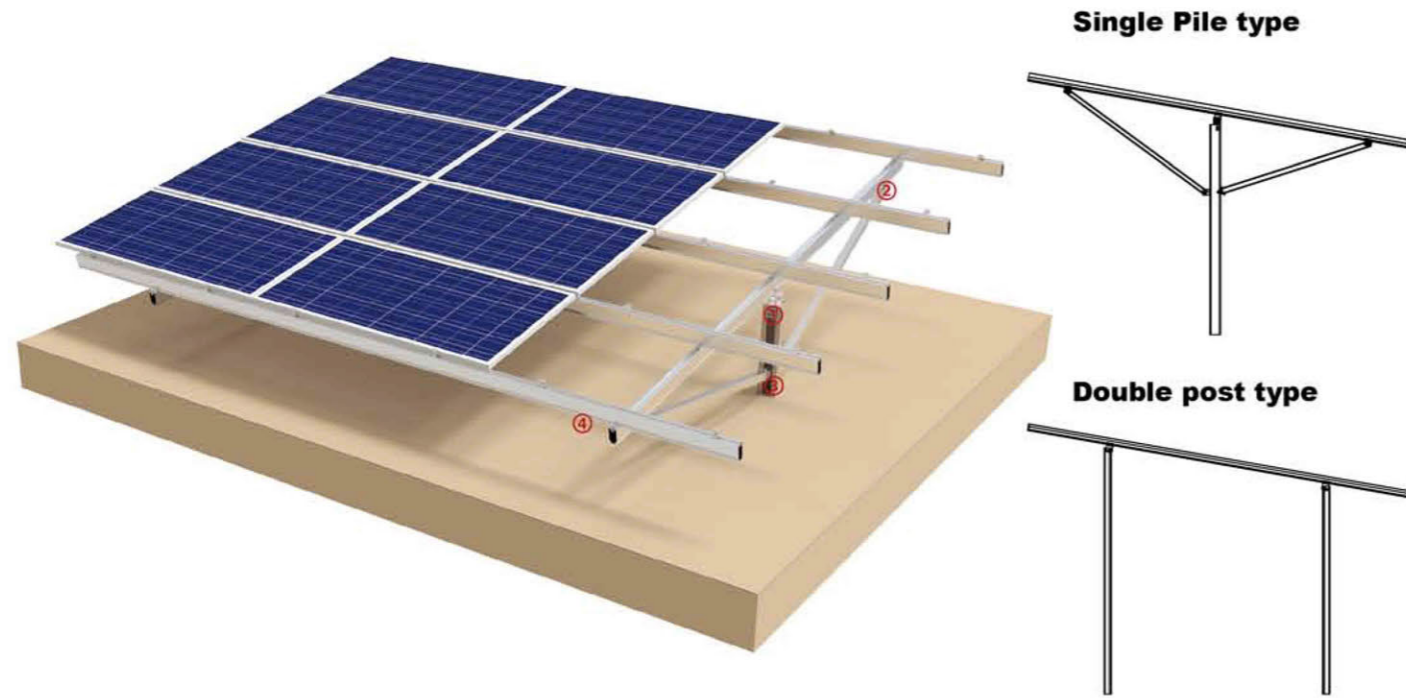
### 2. Installation correction

The design of the long hole of the foot base is conducive to the adjustment of installation error.



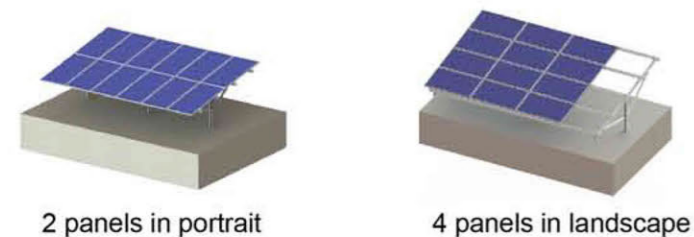
# Ground Pile Mounting ( Aluminum+Steel )

Pile ground mounting is designed for servicing to large-scale solar farm MW projects with its cost-effective and easy installation. No ground screw or concrete base are needed. However, it uses the pile column as foot, and have its foot firmly grounded.



## Advantages

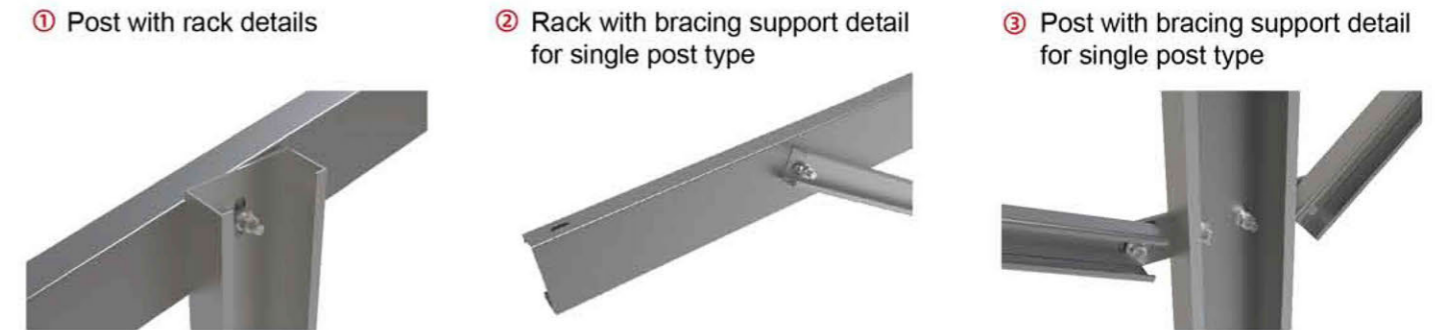
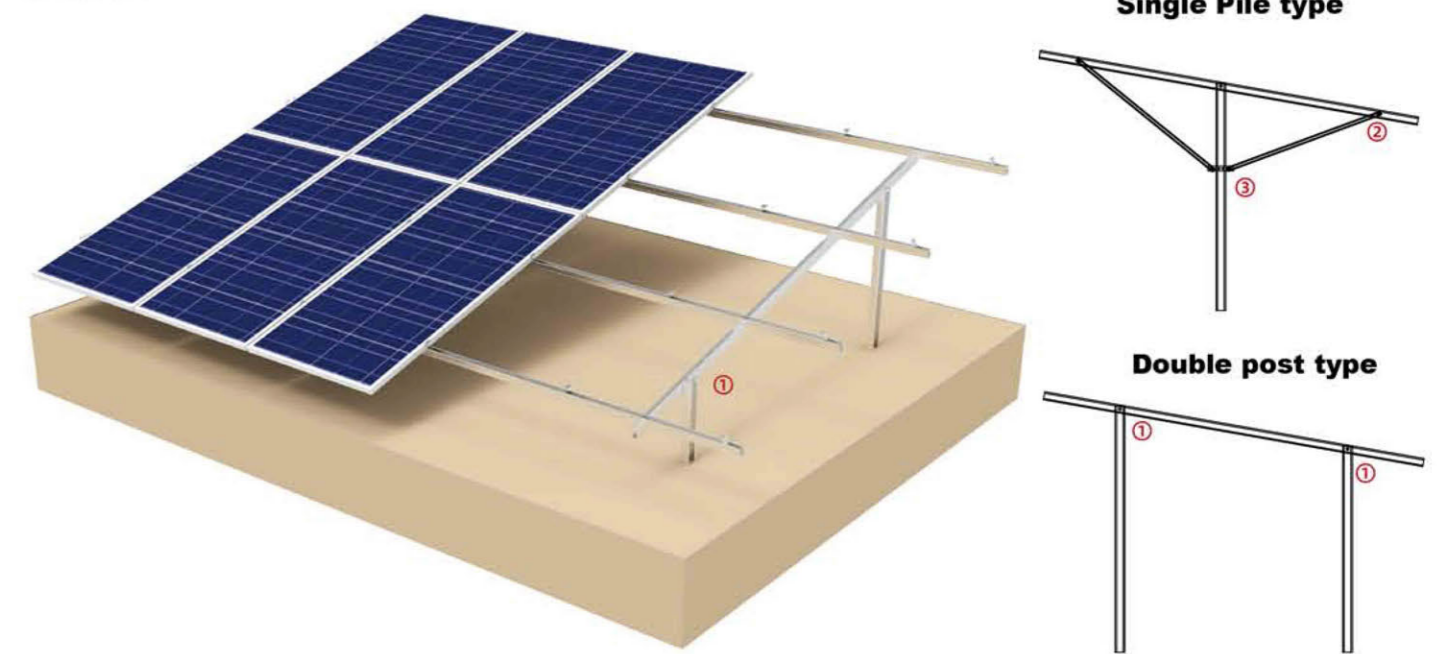
### 1. More flexible for panel layout



### 2. Pre-assembled structure makes the installation to be easier and lower cost.



Pile ground mounting is designed for servicing to large-scale solar farm MW projects with its cost-effective and easy installation. No ground screw or concrete base are needed. However, it uses the pile column as foot, and have its foot firmly grounded.



## Advantages

1. High quality and durability materials are used.
2. Minimum material use and installation costs.
3. More flexible for the installation.

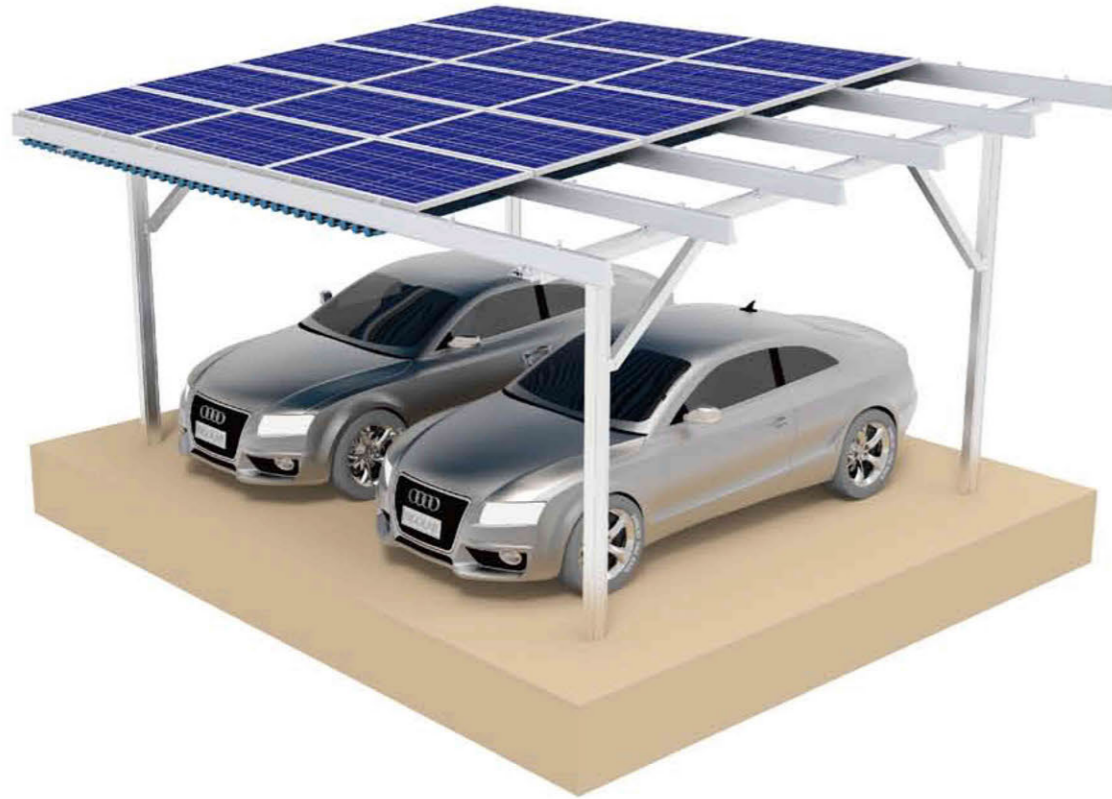
## Technical Data

Installation site :	Open field / Mountain
Module Angle :	0~45 degree
Max wind speed :	Up to 60m/s
Max snow load :	Up to 1.4KN/m2
Material :	Aluminum / Steel
Height:	Customized
Foundation :	Pile
Standard :	AS/NZS S1170 , JISC8955:2017, EU Standard



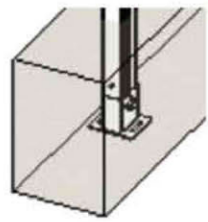
## Full Aluminum Carport ( 4-Poles/N/W Type)

The four poles carport mounting system is designed for scratch-resistant car doors. The whole structure is made of aluminum and fastener will be stainless steel. The capacity can be customized according to customers requirements. Concrete base or ground screw foundation are both available.

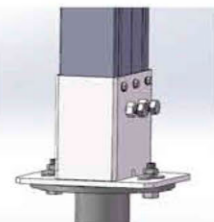


### Connection Details

Pole and concrete/ground screw foundation



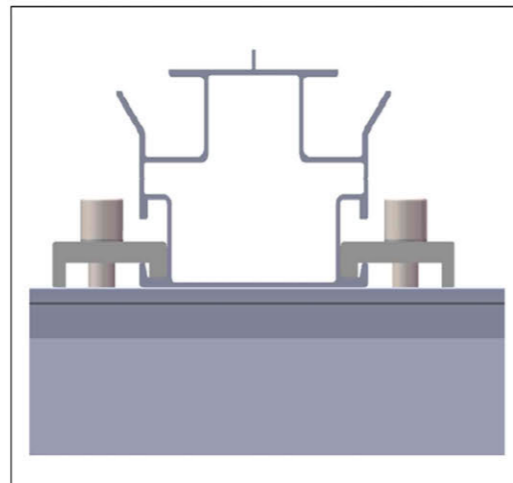
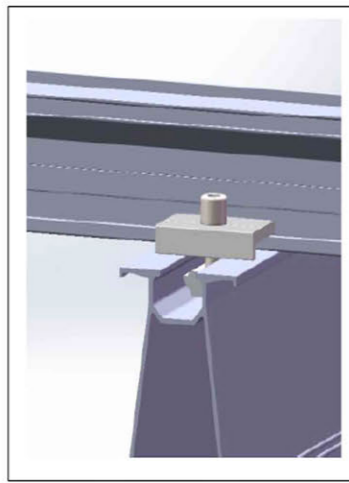
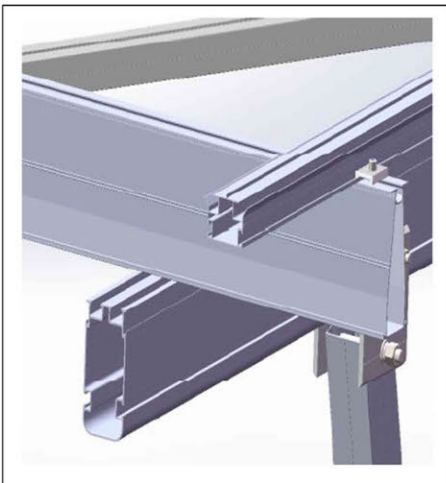
Pole and Beam



Beam and Rail



### Features



Solar aluminum carport can be used for both commercial and residential area. The whole structure is made of aluminum and stainless steel fastener. It can be waterproof and windproof, customized available.

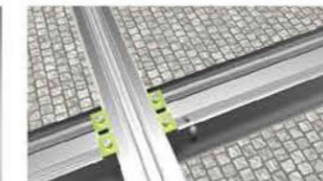


### Connection Details

Rail splice connection.



Fix beam and rail with UI-Clamp-F.



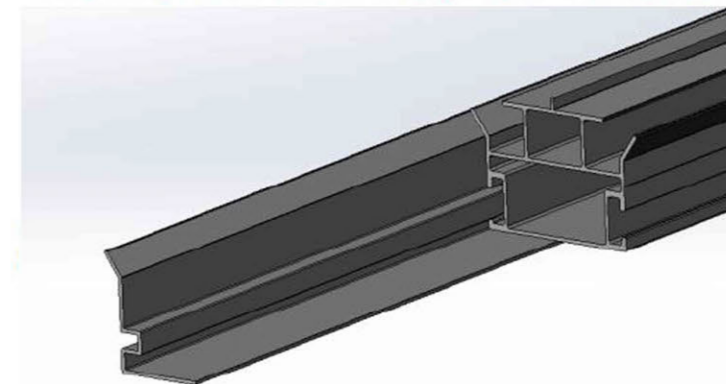
Fix panel and rail with mid/end clamps.



Foot base fixed on concrete with Embedded Anchor Bolt.

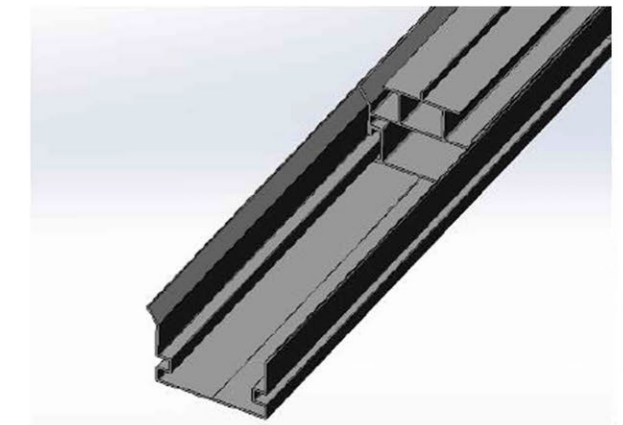


### Waterproof & Windproof Function



#### Windproof

1. Wind deflector is added on each direction to protect the structure from wind and rain effectively.
2. It makes the whole structure a better outlook.



#### Waterproof

1. Waved metal sheet makes the water outflow to the water channel.
2. Water pipe drain away the water on channel.

# BIPV Waterproof Carport ( 4-Poles )

BIPV Waterproof Solar Carport Mounting System is a highly pre-assembly system which is suitable for both residential and commercial projects. While protecting the car from rain, snow, wind and frost damage, it can also provide power generation benefits, which can power for the electric cars. The whole structure is made of aluminum and fastener will be stainless steel. The capacity can be customized according to customer's requirements.



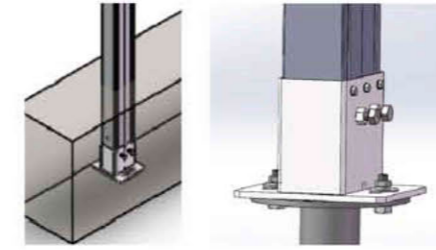
## Components List



## Waterproof drainage system

## Connection Details

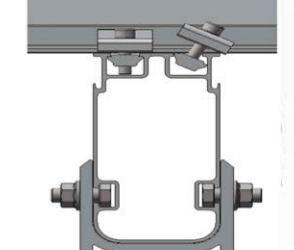
Pole and concrete/ground screw foundation



Pole and Beam

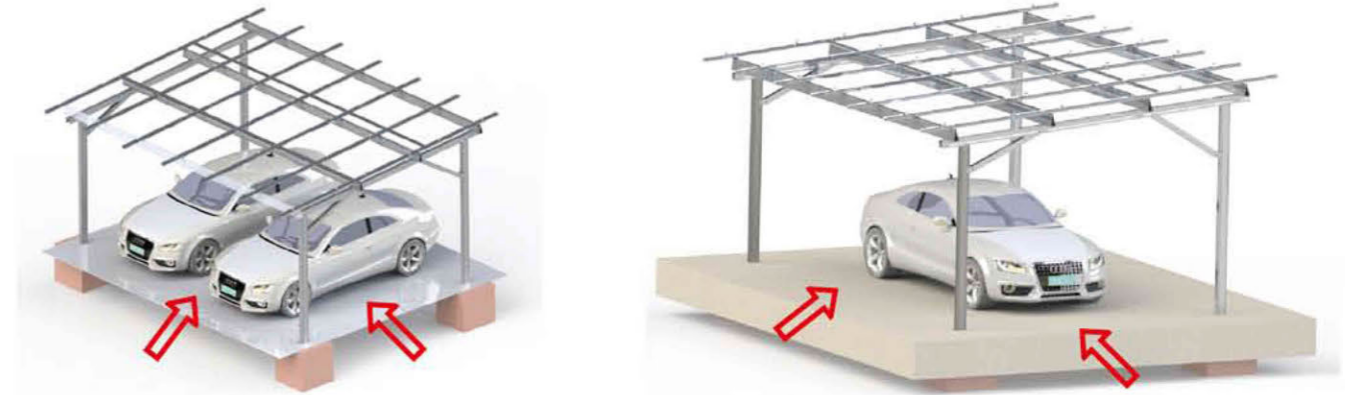


Beam and Rail



## Features

Allow to park from all directions



## Waterproof solution



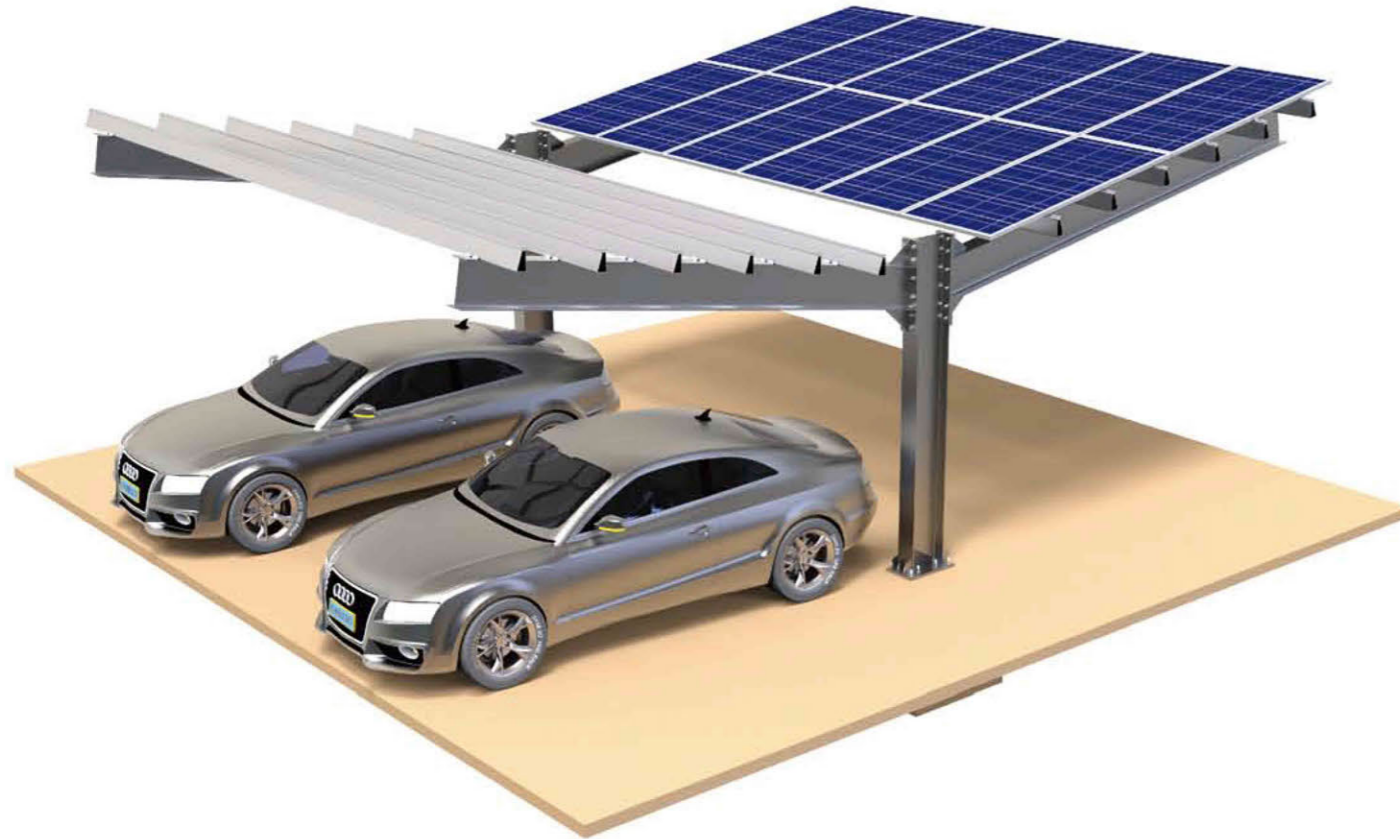
Installing the horizontal drainage pipe and margin plate to drain away water. The structure itself is waterproof, no need for additional waterproof sheet.

# Single-Pole Solar Carport (C-Steel Post)

Raysol single pole carport is designed for both commercial, utility and residential carport structures with easy installation and highly- preassembling. No welding and cutting are needed for the installation.

### Advantage

1. Highly pre-assembled structure: It makes the installation easier and faster.
2. Easily parking: It allows you to park from any direction.
3. High strength: Its design and materials make the whole structure stronger.



### Components List

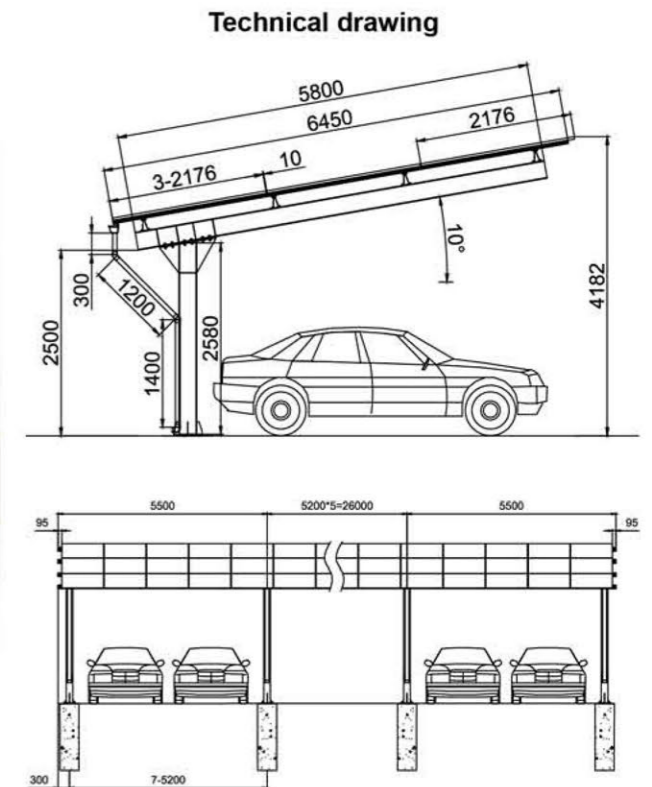


### Technical Features

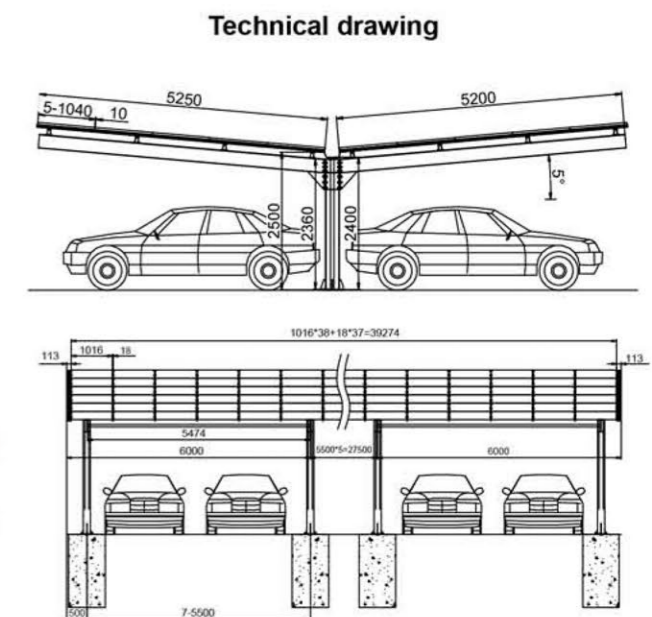
Panel orientation :	Landscape/Portrait
Foundation :	Concrete base
Panel tilt angles :	0-15degrees
Protection :	Q235B Hot Dip Galvanized Steel

### Different Types of Carport

#### 1. One Side Carport

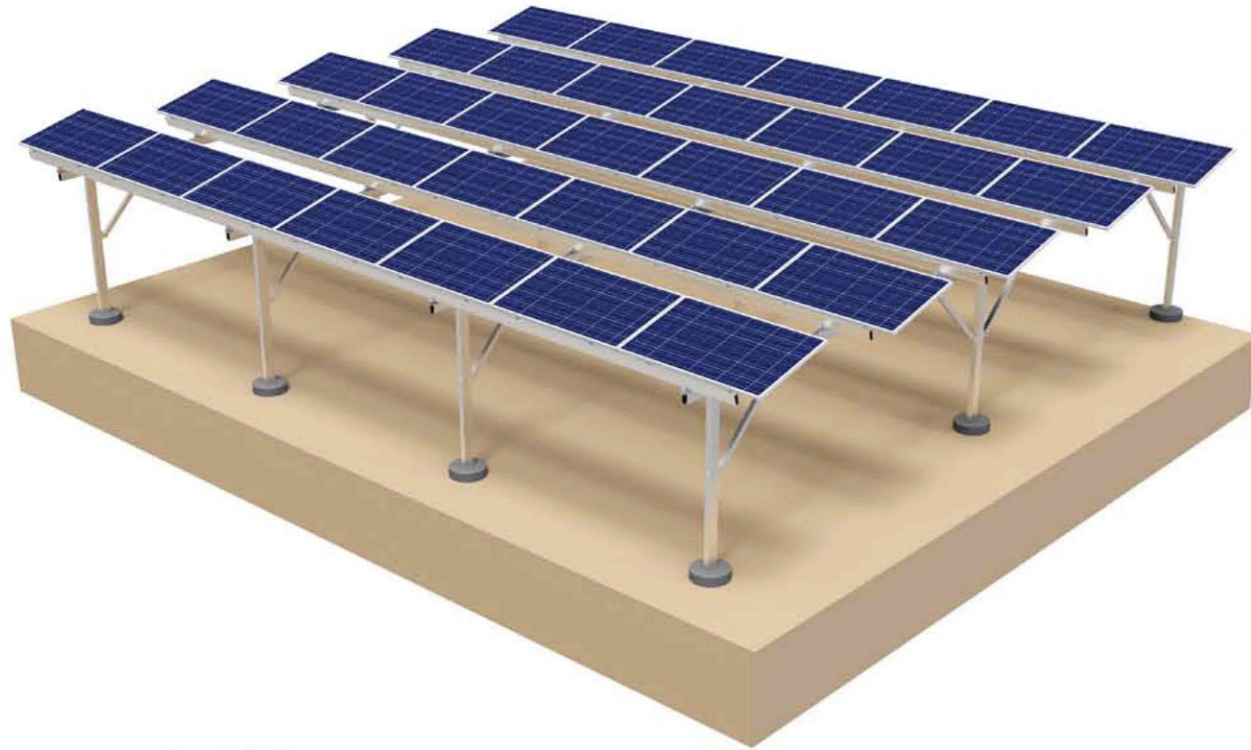


#### 2. Double Sides Carport

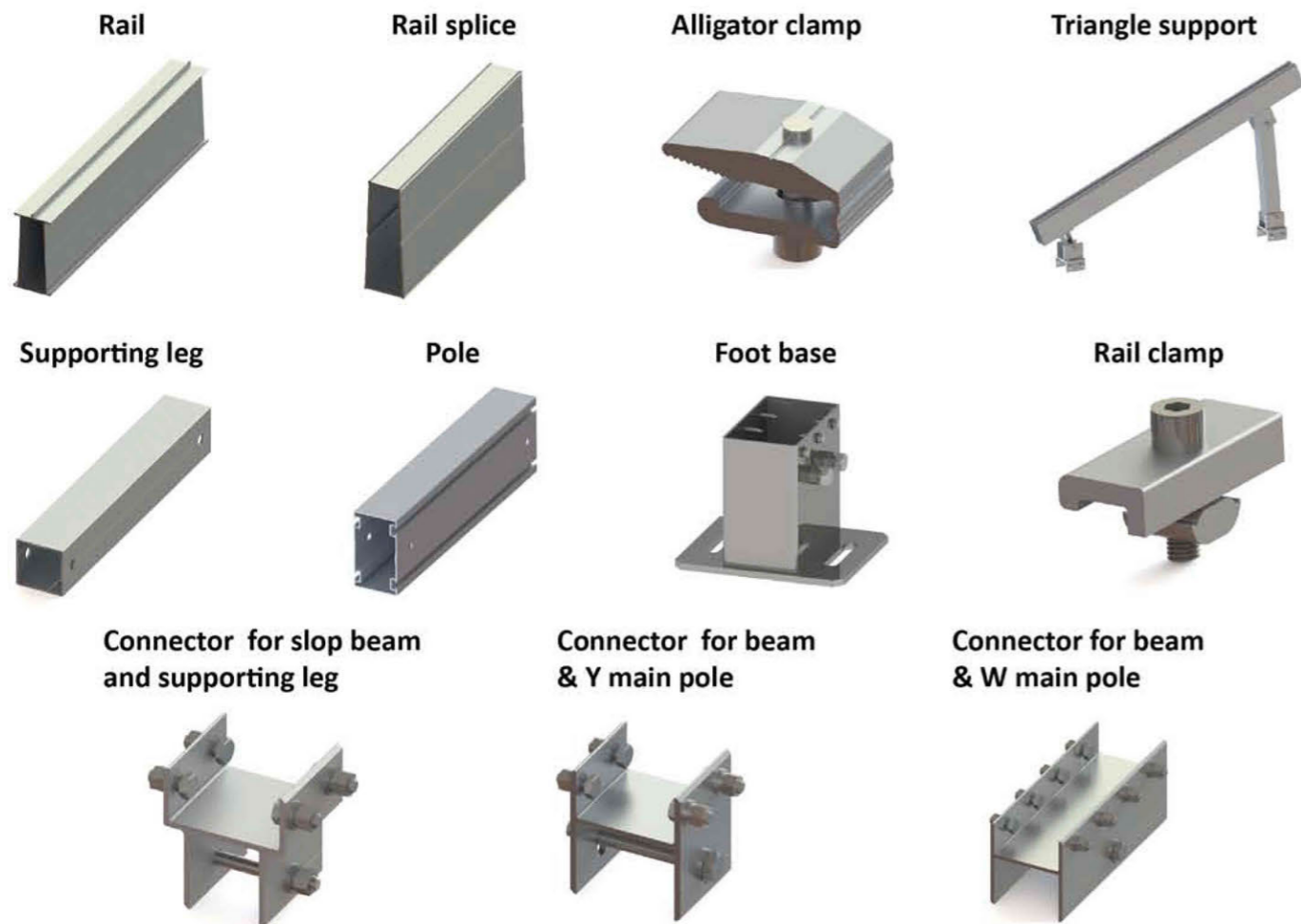


# Agrivoltaic/Agricultural Solar Mounting

Agrivoltaic solar mounting bracket provides the perfect combination for both electricity generation and farming. It not only generates the energy but also protects plants from the extreme weather and gathers the heat for fast growing.

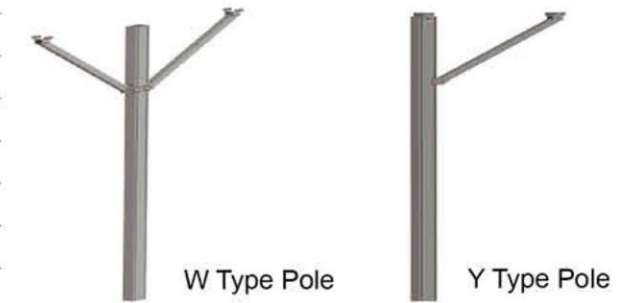


## Components List



## Technical Data

Installation side :	Open field/Ground
Module angle :	0~60 degree
Max wind speed :	Up to 80m/s
Max snow load :	Up to 1.4KN/m2
Material :	AL6005-T5 & SUS304
Module orientation :	Landscape, Portrait
Foundation :	Concrete base, Ground screw
Standard :	AS/NZS S1170, JISC8955:2017



## Advantages

1 Multiple choice with clamps



2 Multiple choice with strength

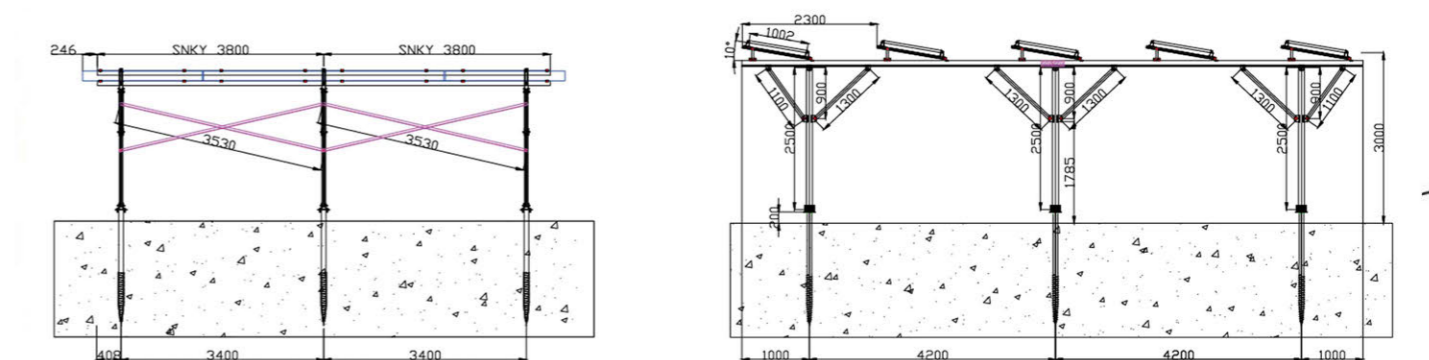


3 Easy for solar farming

1. Max 6.5\*5m length, easy for large machinery to pass in and out.      2. It is easy to do shading rating adjustment by pane layout

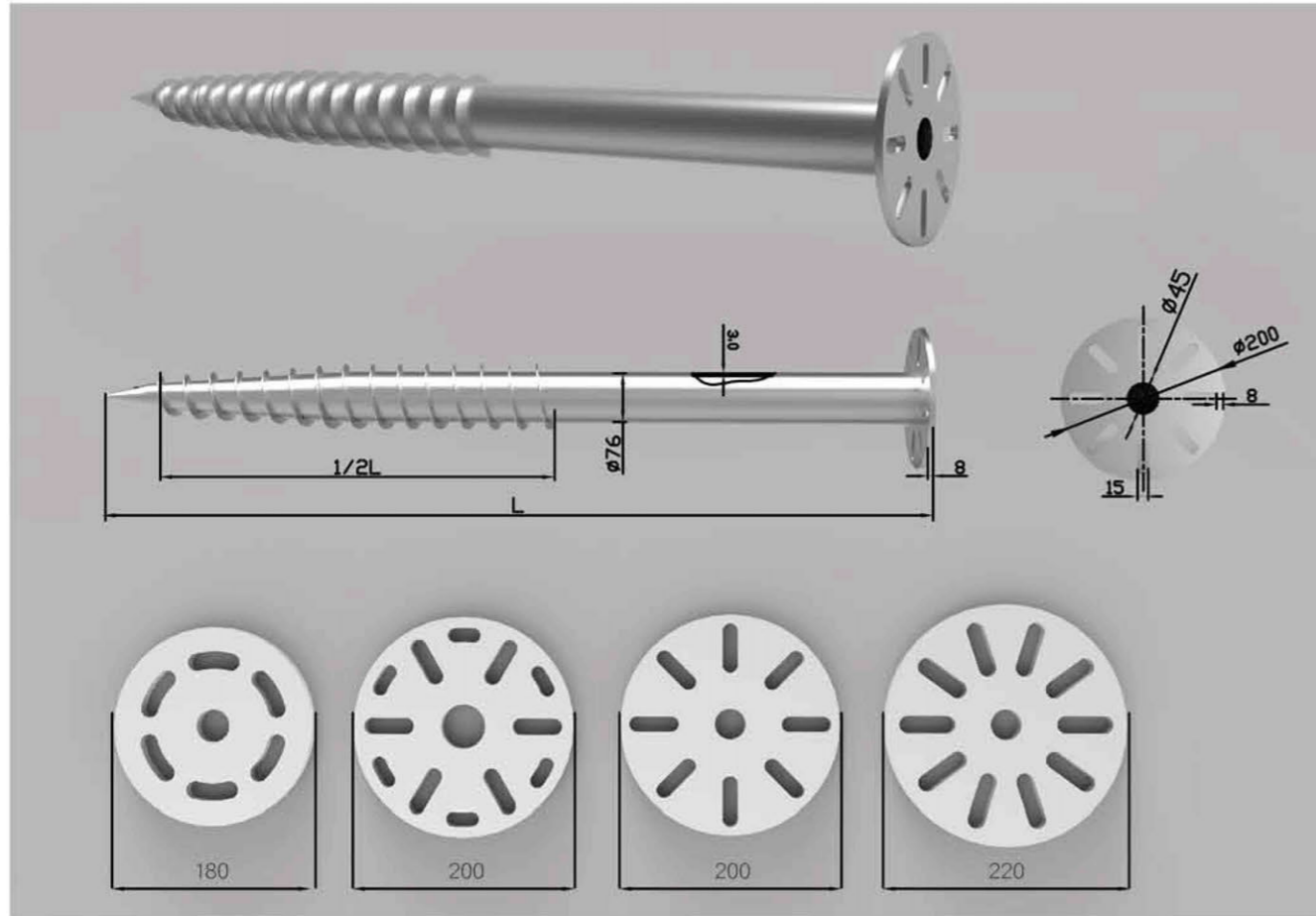
4 Deign for sloping ground

Suitable for flat ground, inclined mountain agricultural racking design, effective use of land.



# Ground Screw Piles

Raysol Ground Screw is made of Q235 material. We have flange top and tube top types with different specification. Our standard thickness is 2.75mm, 2.5mm and 3mm and length with 1200mm, 1600mm, 1800mm, 2000mm. The length and size could also be customized. It can be used for many kinds of application, like Timer-Frame Construction; Advertising and Traffic Systems; Urban, Garden and Landscape Construction; Hall and Container Construction; Fencing Systems, Solar Systems; Flag Poles & Banners etc.



## Brief Introduction

Material:Q235  
 Surface:Hot Dip Galvanization  
 Thickness:3.0mm/2.75mm/2.5mm/3.5mm  
 Series:Flange Top, Tube Top



## Advantages

- 01 Compatibility with all type of structures.**  
Our technical department will adapt the head of our ground screw piles to whatever the customer need.
- 02 Foundation solution concrete free**  
No need of concrete base.
- 03 Surrounding areas remains unspoiled**  
The special configuration of our products allows the insertion without performing land preparation works, which allows a significant cost reduction.
- 04 Easy removal, simple and easy to relocate**  
One of the main advantages of our ground screw piles is the possibility of removing them, reducing the environmental impact and minimizing the removing costs.

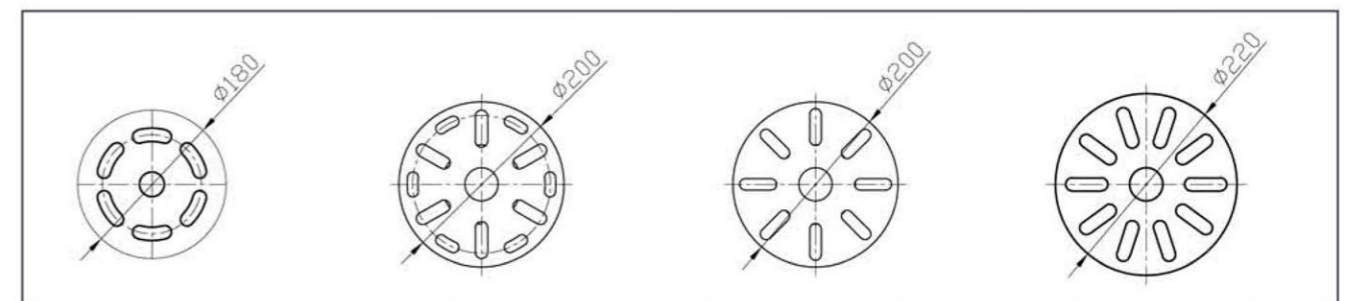
## Ground Screw



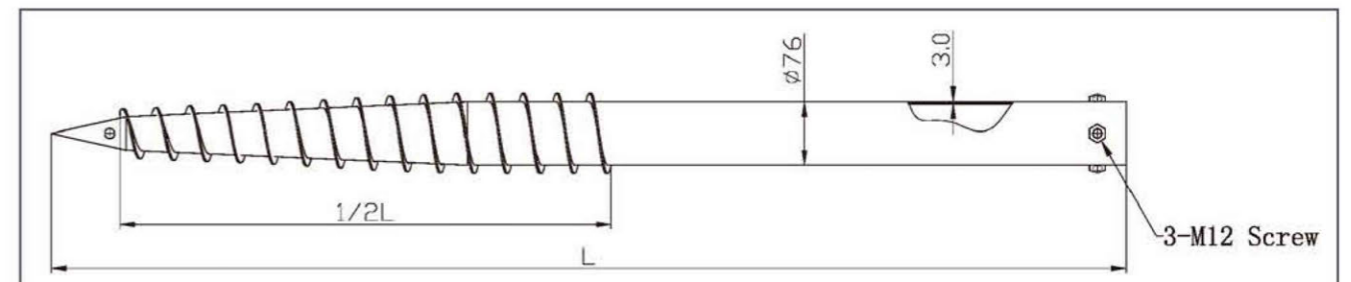
## Specification

NO	Code1	Surface	Material	H(mm)	D(mm)	Galvanized Surface	Thickness
01	F76×L— 2	Hot Galvanized	Q235	Customized	76	≥ 80 μm	3.5mm/ 2.75mm/ 2.5mm/ 3.0mm
02	F76×L— 4			Customized	76	≥ 80 μm	
03	F76×L			Customized	76	≥ 80 μm	
04	N76×L			Customized	76	≥ 80 μm	
05	F76×L— A			Customized	76	≥ 80 μm	

## Flange Type



## Tube Type



# Projects Reference



10MW in Mongolia



3MW in Japan



200KW in Qatar



50kw in Japan



1MW in Japan



3MW in Spain



6MW in Japan



5MW in Japan



1MW in Japan



50kw in Japan



2MW in Kenya



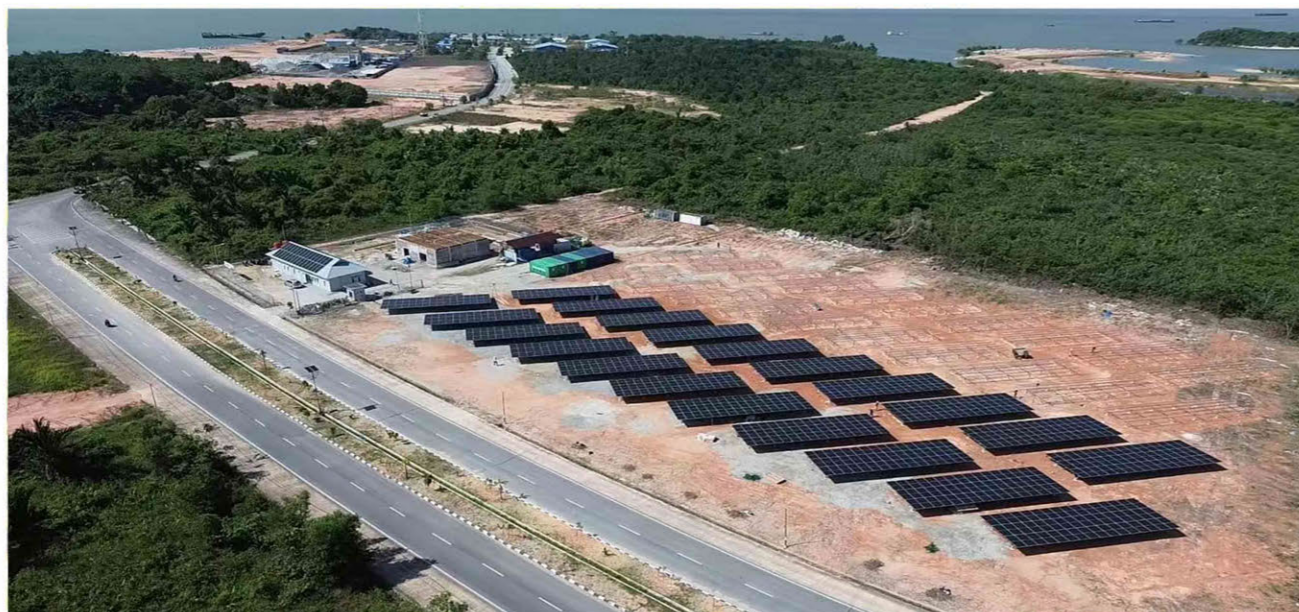
200kw in Dubai



700kw in Bangal



500kw in Oman



2MW in Indonesia



1MW in Japan